

PROMET

RESISTANCE MEASUREMENT



High-precision micro-ohm measuring systems with adjustable DC test current for determining of resistances, e.g. on circuit breakers or inductive loads such as transformers.



PROMET L10

Mains-independent measuring device with integrated rechargeable battery: compact, handy and versatile!

The portable measuring device, which is as compact as a multimeter, offers a wide range of applications thanks to its high functionality and large measuring range. In addition to measuring ohmic loads, it is particularly suitable for measuring inductive loads, e.g. for determining winding resistances in transformers, motors and instrument transformers. The device can be operated directly via the buttons or via Bluetooth with the Test Center app.



| | | |
|---------------------|----------------------------|----------------------------|
| Resistance | Range | up to 5 kΩ |
| | Accuracy | 0.2 % |
| Current source | Current outputs, quantity | 1 |
| | Test current | 1 mA...10 A |
| | Output voltage | 5 VDC |
| Voltage measurement | Measuring inputs, quantity | 1 |
| Display | | Graphic LC display |
| Power supply | | Battery operation |
| Housing | | Portable hand-held housing |
| Weight | | 0.6 kg |

PROMET L100s

Mains-independent measuring device with exchangeable battery. The compact measuring device with a standard tool battery enables fast operational readiness and uninterrupted measurements. The robust hard case provides optimum protection for the device so that it can also be used on site in harsh environments. The measuring device is suitable for measuring ohmic and inductive loads as well as for resistance measurements on switching devices in combination with ACTAS test systems. The intuitive user interface with touchscreen ensures simple and efficient operation.



| | | |
|---------------------|----------------------------|---|
| Resistance | Range | up to 2.5 Ω |
| | Accuracy | 0.2 % |
| Current source | Current outputs, quantity | 1 |
| | Test current | 1...100 A |
| | Output voltage | 10 VDC |
| Voltage measurement | Measuring inputs, quantity | 1 |
| Display | | 5"-Touchscreen |
| Power supply | | Battery operation, Interchangeable tool battery |
| Housing | | Hard case |
| Weight | | 4.5 kg |

PROMET SE

Mains-independent measuring device with integrated rechargeable battery for precise on-site measurements. This lightweight and portable measuring device is designed for measuring ohmic loads and enables both static and dynamic resistance measurements on switching devices. Two current outputs and two voltage measurement inputs allow simultaneous resistance measurement at two measuring points. The two voltage measurement inputs also make it possible to accurately assess the quality of current connections. The intuitive user interface with touchscreen combines flexible handling with high functionality.



| | | |
|---------------------|----------------------------|----------------------------|
| Resistance | Range | up to 250 mΩ |
| | Accuracy | 0.2 % |
| Current source | Current outputs, quantity | 2 |
| | Test current | 5...200 A |
| | Output voltage | 2.5 VDC |
| Voltage measurement | Measuring inputs, quantity | 2 |
| Display | | 3.5" - Touchscreen |
| Power supply | | Battery operation |
| Housing | | Portable hand-held housing |
| Weight | | 1.5 kg |

PROMET R300 / PROMET R600

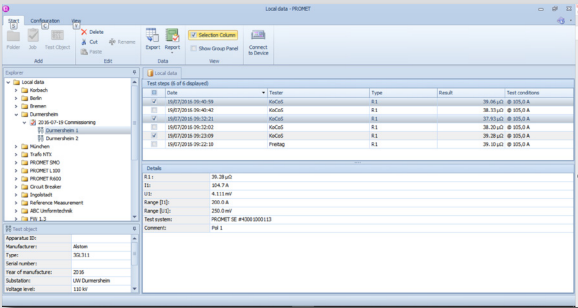
Powerful measuring devices with mains operation and versatile application options. This measuring devices are available both for stationary installation in a 19" rack and in a portable housing. They offer test currents of up to 300 A resp. 600 A and are specialized in measuring ohmic loads. With three voltage measurement inputs three resistors connected in series, can be measured simultaneously. The devices support both static and dynamic resistance measurements on switching devices and can also be used as a constant current source for continuous current output. The intuitive user interface with touch screen facilitates operation, while the programming interface enables easy integration into your own applications.



| | | |
|---------------------|----------------------------|---|
| Resistance | Range | up to 250 mΩ |
| | Accuracy | 0.1 % |
| Current source | Current outputs, quantity | 1 |
| | Test current | 10...300/600 A |
| | Output voltage | 5 VDC |
| Voltage measurement | Measuring inputs, quantity | 3 |
| Display | | 5" - Touchscreen |
| Power supply | | Mains operation |
| Housing | | 19" installation housing optional: portable housing |
| Weight | | 7.6/10.5 kg |

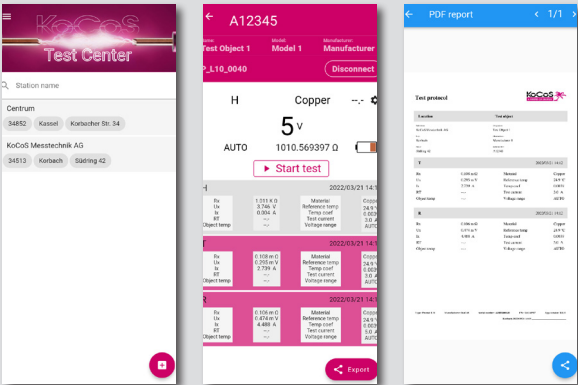
PROMET Software

The PROMET L100s/SE/R300/R600 devices can be connected directly to a PC. User-friendly software enables the stored data to be read out and managed. The measurement results can be clearly displayed, exported to Excel or output in a test report.



Test Center App

Operating the PROMET L10 via Bluetooth app allows the device to be controlled using a smartphone or tablet. Measurements can be carried out wirelessly and safely. The measurement data can be saved directly, sent as a PDF, printed out or exported as a CSV file.



KoCoS Messtechnik AG
Südring 42
34497 Korbach, Germany
Tel. +49 5631 9596-40
info@kocos.com
www.kocos.com

