

# ACTAS



## ACTAS L260 | L360

### Switchgear Test Systems

High-precision test systems for function tests on various types of switchgear device, including circuit breakers, disconnectors or earthing switches, regardless of the type of drive unit, for use in development, laboratory and production environments.

- Extremely flexible and versatile
- Connection of inputs and outputs via terminal strip
- 50 kHz sampling rate with a 200 kHz oversampling per measurement channel
- Calibration data storage on each measurement card
- Easy exchange of measurement cards
- 19" drawer housing for easy installation in a standard system cabinet
- More than 44 analog measurement inputs for simultaneous measurements as well as binary measurement inputs and measurement inputs for incremental sensors
- DAC outputs or Ethernet ports for controlling additional devices
- Testing via the ACTAS 2.60 testing software including all modules and functions

**KoCoS**  
A FRIEND OF ENERGY

www.kocos.com

### Construction and function

The test systems are mounted in a 19" drawer housing. The inputs and outputs are connected flexibly via a terminal strip, making the test systems particularly suitable for use in development, laboratory and production environments.

The measurement and control cards are inserted in card slots on the back panel of the system. All system and calibration data are saved directly on each individual card. This makes it easy to exchange the cards, even between different test systems. Measurement cards can be kept in stock as spare parts and exchanged „plug and play“ which guarantees high availability.

#### ■ Measurement on 18 PIR and main contacts

Determination of operating times for various switching sequences on up to 18 PIR and main contacts.

#### ■ 24 auxiliary contact inputs

Status indication for up to 24 auxiliary contacts with adjustable activation range.

#### ■ 14 sensor inputs

Up to 8 analog and 6 digital sensor inputs for analog and incremental sensors for pressure, travel and temperature measurement. The sensor inputs can be configured flexibly to meet the requirements of the specified measuring ranges.

#### ■ Coil and motor current

Coil current measurement and control on up to 3 closing and 6 opening coils with 100 A peak. Freely selectable measuring ranges make it possible to obtain extremely precise measurement results. A direct motor current measurement at 3 measurement inputs with 100 A peak is also possible.

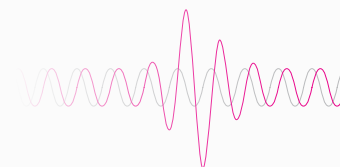
#### ■ Undervoltage release, minimum operating voltage and tests with min., nom. and max. operating voltage

The digital and analog control of voltage sources allows fully automated test procedures to be carried out with ACTAS L. Reproducible under always identical conditions. ACTAS L offers up to 3 voltage measurement channels with 300 VAC and 3 additional voltage measurement channels with 500 VAC.



#### ■ Contact resistance determination

Used in combination with various ohm meters of the PROMET product line, both the static and the dynamic contact resistance can be determined directly and simultaneously on 3 poles with 2 interrupter units each. An extension of the control outputs for more additional devices is possible at any time, which allows e.g. up to 10 interrupter units per pole to be measured.



### ACTAS L in a system cabinet

In addition to the drawer housing version, the ACTAS L systems are also available fully mounted in a 19" /20 U system cabinet. The inputs and outputs are then connected via 4 mm safety sockets on the front panel of the system cabinet. All coil control outputs and analog/binary inputs are led one to one from the L system to the front panel of the system cabinet.

It is also possible to integrate voltage sources and ohm meters in the system cabinet. Thanks to the low overall height and the installation in a system cabinet with castors, the systems can be used very flexibly at different locations in the laboratory, in development or in production.

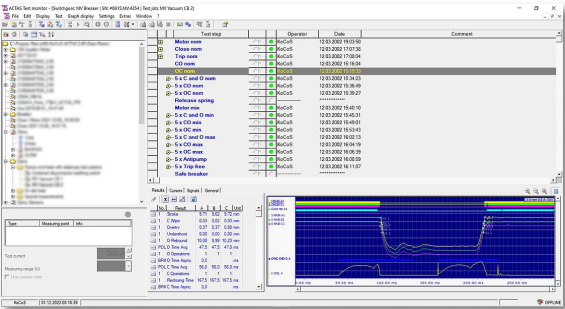


### Operation and evaluation

The ACTAS L systems are operated using the reliable ACTAS 2.60 testing software, and the user benefits from over 30 years of experience in the field of switchgear testing. As existing test templates and procedures can be retained, the test systems can be easily integrated into existing structures. All modules of the testing software are included in the scope of delivery.

#### Advantages:

- Functions for importing and exporting data, such as .csv or .xml
- Test object import via barcode, RFID or .xml
- Export of any data structures to Access, MySQL, Oracle etc., manually or automatically
- Report editor templates can still be used
- Test statistics can be easily created
- Automatic test procedures with repetitive operations
- Creation and use of reference curves
- Generation of virtual measurement channels
- Automatic monitoring of relay signals
- Conversation tables from rotary to linear movements
- Long-term measurements



ACTAS 2.60 Software

### Technical data

	L360	L260
Operating voltage	110...265 VAC/DC	
Control outputs for closing coils	3	1
Control outputs for opening coils	6	2
Main and PIR contacts	9 x 2	3 x 2
Coil current	3 x 3 (I/O)	1 x 3 (I/O)
Coil / motor / station voltage	6	2
Motor current via shunt	3	1
Sensor (+/- 10 V / 0...20 mA)	6/2	3/1
Sensor digital	3 x 4	2 x 4
Analog control outputs 0...10 VDC	4	2
Reference voltage for sensors 10 VDC / 200 mA	2	1
PC connection	1 x Ethernet	
Interfaces	RS422 (no control of additional devices possible)	
Interfaces for external devices	3 x RJ45 for PROMET and voltage sources / 1 x RJ45 for CSW3	
Housing	19" drawer housing	
Protection	IP20	
Dimensions (mm)	482.6 x 265.9 x 242.0	
Weight (kg)	7.3	6.3

KoCoS Messtechnik AG  
Südring 42  
34497 Korbach, Germany  
Tel. +49 5631 9596-40  
info@kocos.com  
www.kocos.com